

SHEET SCHEDULE

- 1.1 PROJECT LOCATION AND SITE ACCESS
- 1.2 DEMOLITION AND PROTECTION PLAN
- 1.3 SITE PLAN
- 1.4 SITE LAYOUT PLAN
- 1.5 GRADING AND EROSION CONTROL PLAN
- 1.6 DESIGN COMPUTATIONS
- 1.7 DETAILS



City of Madison
 Department of Public Works
PARKS DIVISION
 City-County Building, Suite 104
 210 Martin Luther King, Jr. Blvd.
 Madison, WI 53703

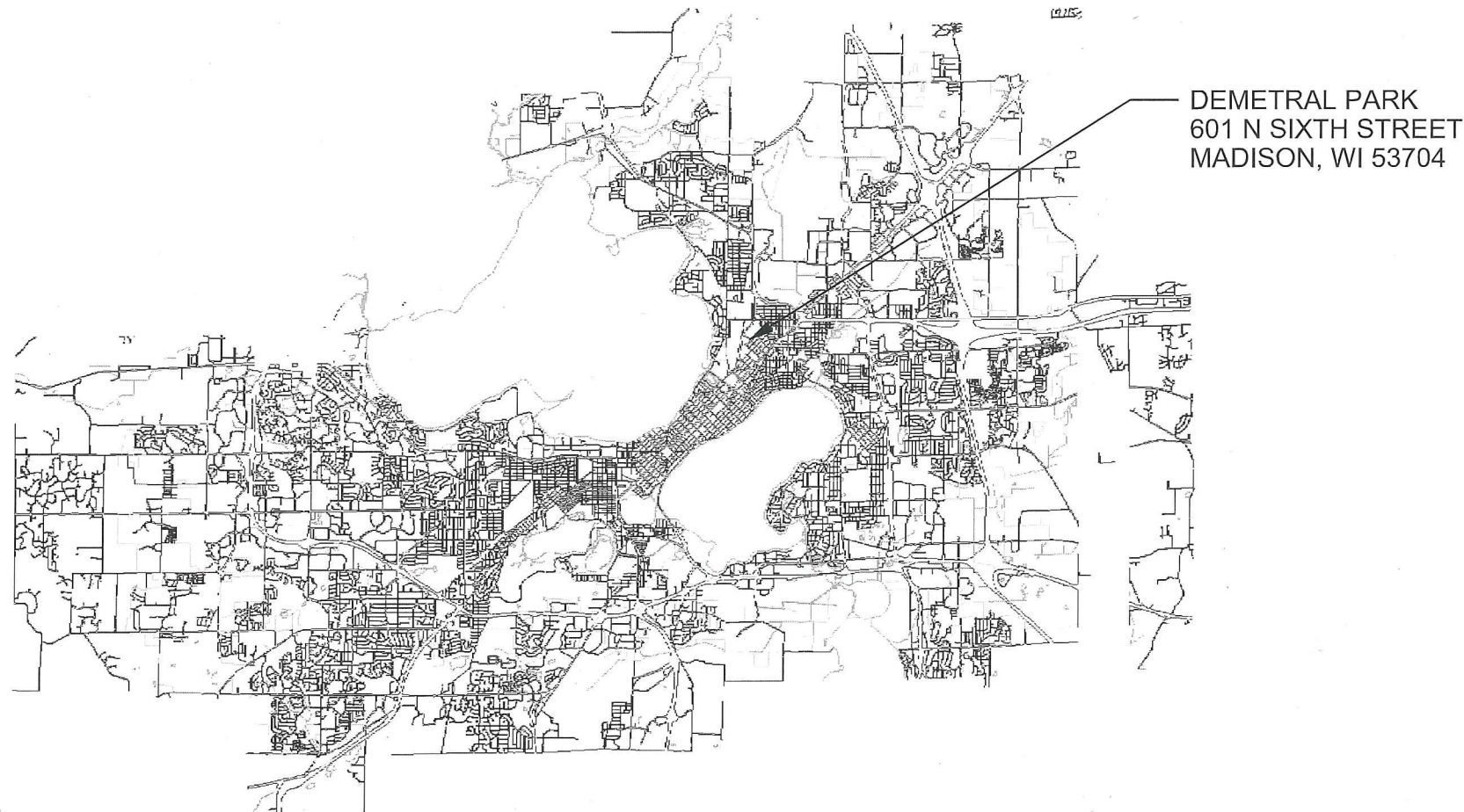
play
**MADISON
 PARKS**



DEMETRAL PARK ADULT FITNESS
 CONTRACT 7970
 MUNIS NO. 17437-51-130

PROJECT:

*DEMETRAL PARK
 ADULT FITNESS*



DEMETRAL PARK
 601 N SIXTH STREET
 MADISON, WI 53704

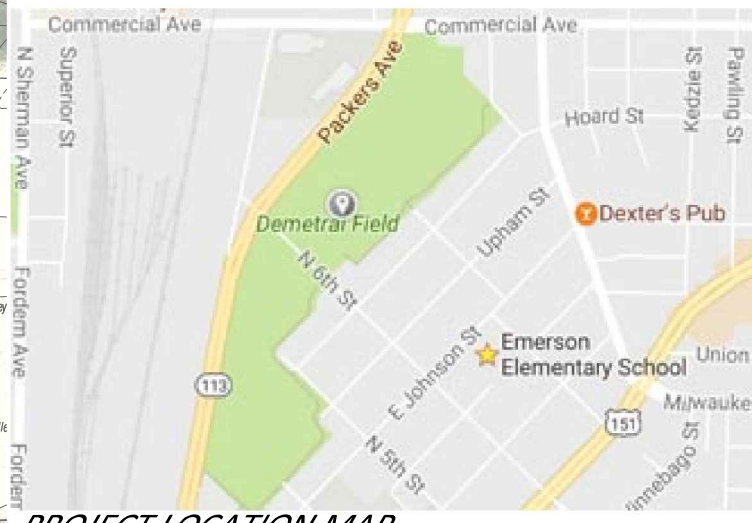
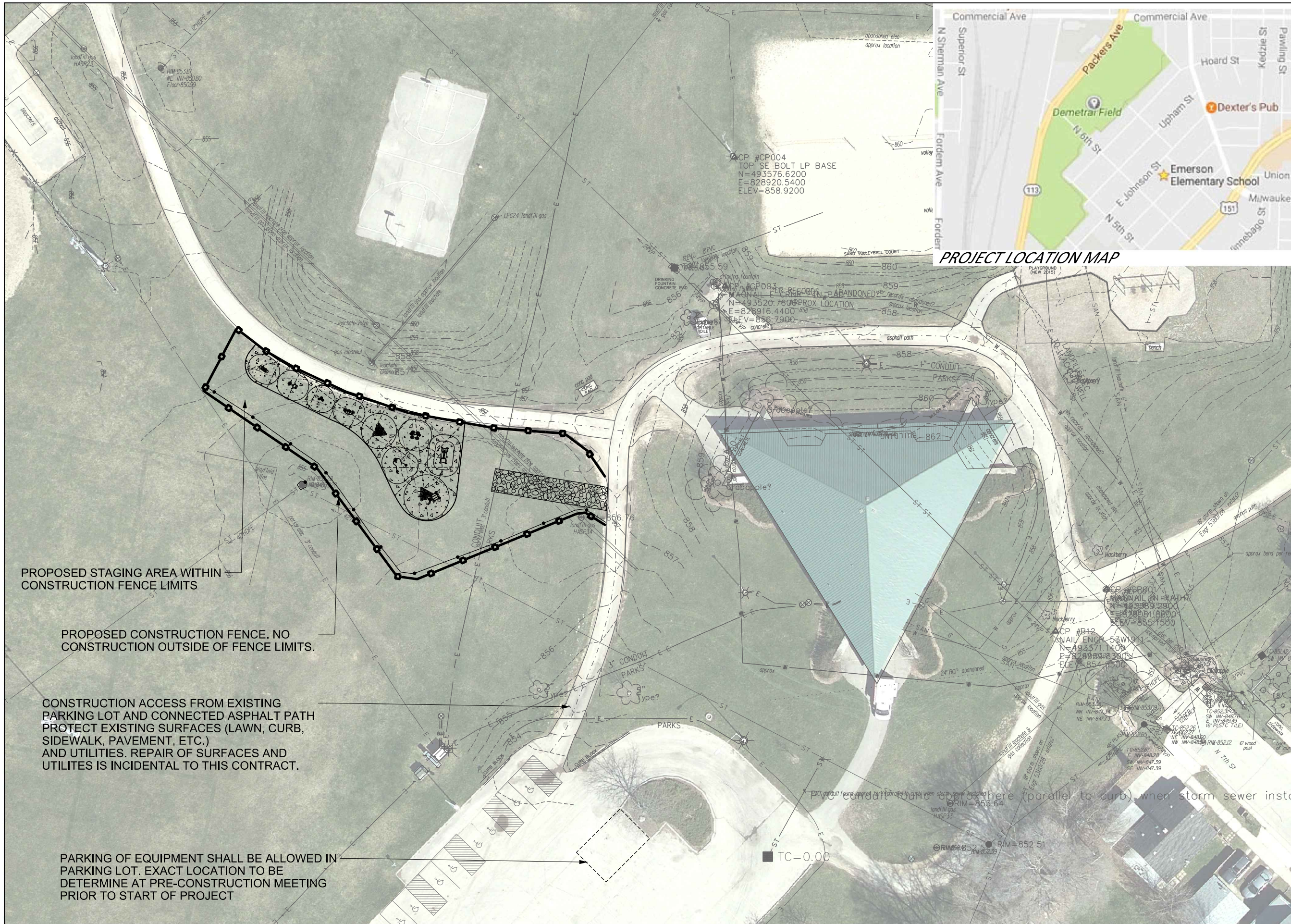
Although every effort has been made in preparing these plans and checking them for accuracy, the contractor and subcontractors must check all details and dimensions of their trade and be responsible for the same.

ITEM	DATE
Advertised by: KK	06-16-2017

PUBLIC WORKS PROJECT #:
7970

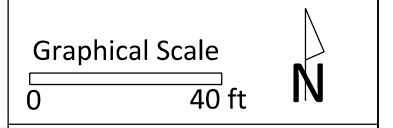
SHEET TITLE:

SHEET NUMBER:



City of Madison
 Department of Public Works
PARKS DIVISION
 City-County Building, Suite 104
 210 Martin Luther King, Jr. Blvd.
 Madison, WI 53703

play
**MADISON
 PARKS**



PROJECT:
**DEMETRAL PARK
 ADULT FITNESS**

**DEMETRAL PARK
 601 N. SIXTH ST
 MADISON, WI 53704**

Although every effort has been made in preparing these plans and checking them for accuracy, the contractor and subcontractors must check all details and dimensions of their trade and be responsible for the same.

ITEM	DATE
Drawn by: KK	06-16-2017
Approved by:	xx-xx-xxxx

PUBLIC WORKS PROJECT #:
7970

SHEET TITLE:
**PROJECT LOCATION
 AND SITE ACCESS**

SHEET NUMBER:
1.1



PROPOSED STAGING AREA WITHIN CONSTRUCTION FENCE LIMITS

PROPOSED CONSTRUCTION FENCE. NO CONSTRUCTION OUTSIDE OF FENCE LIMITS.

CONSTRUCTION ACCESS FROM EXISTING PARKING LOT AND CONNECTED ASPHALT PATH PROTECT EXISTING SURFACES (LAWN, CURB, SIDEWALK, PAVEMENT, ETC.) AND UTILITIES. REPAIR OF SURFACES AND UTILITIES IS INCIDENTAL TO THIS CONTRACT.

PARKING OF EQUIPMENT SHALL BE ALLOWED IN PARKING LOT. EXACT LOCATION TO BE DETERMINE AT PRE-CONSTRUCTION MEETING PRIOR TO START OF PROJECT

LEGEND

-  REMOVE EX. LAWN
-  PRO. CONSTRUCTION ENTRANCE
-  PRO. CONSTRUCTION FENCE
-  PRO. SILT SOCK
-  EX. CONTOUR (INDEX)
-  EX. CONTOUR (INTER.)
-  EX. APPROX. PARK BOUNDARY

NOTES

1.) THE CONTRACTOR IS RESPONSIBLE FOR REPAIRING ANY EXISTING UTILITIES, STRUCTURES, SIDEWALK, CURB, LAWN, PAVEMENT, ETC. DAMAGED THROUGH CONSTRUCTION ACTIVITIES AT THEIR OWN EXPENSE. REPAIRS MUST BE MADE IN ACCORDANCE WITH THE CITY OF MADISON STANDARD SPECIFICATIONS FOR PUBLIC WORKS CONSTRUCTION.

PLACE CONSTRUCTION FENCE PRIOR TO CONSTRUCTION

REMOVE EXISTING TOPSOIL AND EXCAVATE / FILL TO PROPOSED SUBGRADE

CAUTION EXISTING STORM SEWER LINE AND INLET CONTRACTOR SHALL BE RESPONSIBLE FOR REPAIR OF UTILITIES DAMAGED DURING CONSTRUCTION

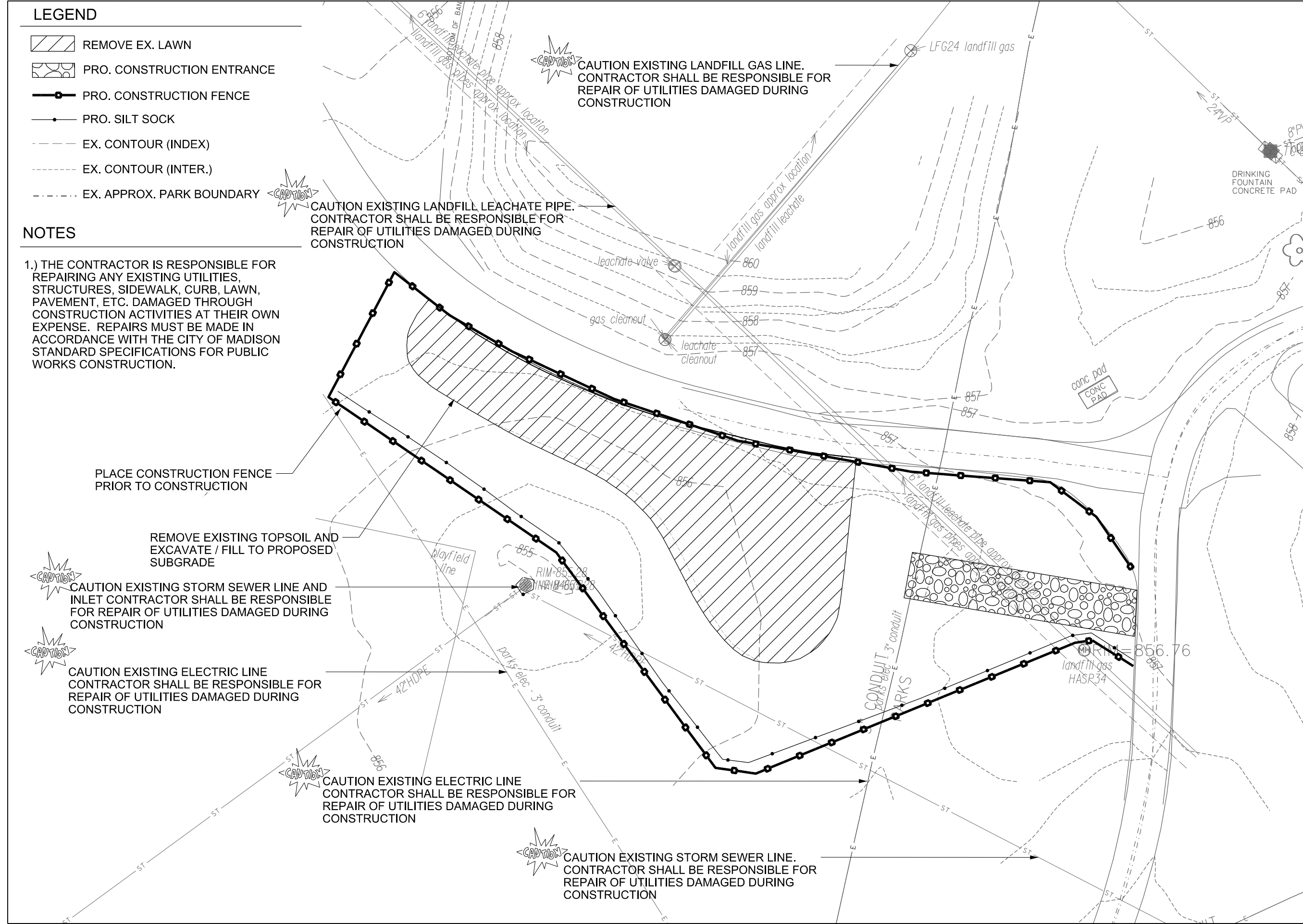
CAUTION EXISTING ELECTRIC LINE CONTRACTOR SHALL BE RESPONSIBLE FOR REPAIR OF UTILITIES DAMAGED DURING CONSTRUCTION

CAUTION EXISTING ELECTRIC LINE CONTRACTOR SHALL BE RESPONSIBLE FOR REPAIR OF UTILITIES DAMAGED DURING CONSTRUCTION

CAUTION EXISTING STORM SEWER LINE. CONTRACTOR SHALL BE RESPONSIBLE FOR REPAIR OF UTILITIES DAMAGED DURING CONSTRUCTION

CAUTION EXISTING LANDFILL GAS LINE. CONTRACTOR SHALL BE RESPONSIBLE FOR REPAIR OF UTILITIES DAMAGED DURING CONSTRUCTION

CAUTION EXISTING LANDFILL LEACHATE PIPE. CONTRACTOR SHALL BE RESPONSIBLE FOR REPAIR OF UTILITIES DAMAGED DURING CONSTRUCTION



City of Madison
Department of Public Works
PARKS DIVISION

City-County Building, Suite 104
210 Martin Luther King, Jr. Blvd.
Madison, WI 53703

play
MADISON
PARKS

Graphical Scale

0 20 ft



PROJECT:

2017 DEMETRAL
PARK ADULT
FITNESS

DEMETRAL PARK
601 N. SIXTH ST
MADISON, WI 53704

Although every effort has been made in preparing these plans and checking them for accuracy, the contractor and subcontractors must check all details and dimensions of their trade and be responsible for the same.

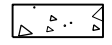
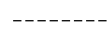
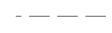
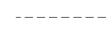

ITEM	DATE
Drawn by: KK	06-16-2017
Approved by:	xx-xx-xxxx

PUBLIC WORKS PROJECT #:
7970

SHEET TITLE:
DEMOLITION AND
PROTECTION PLAN

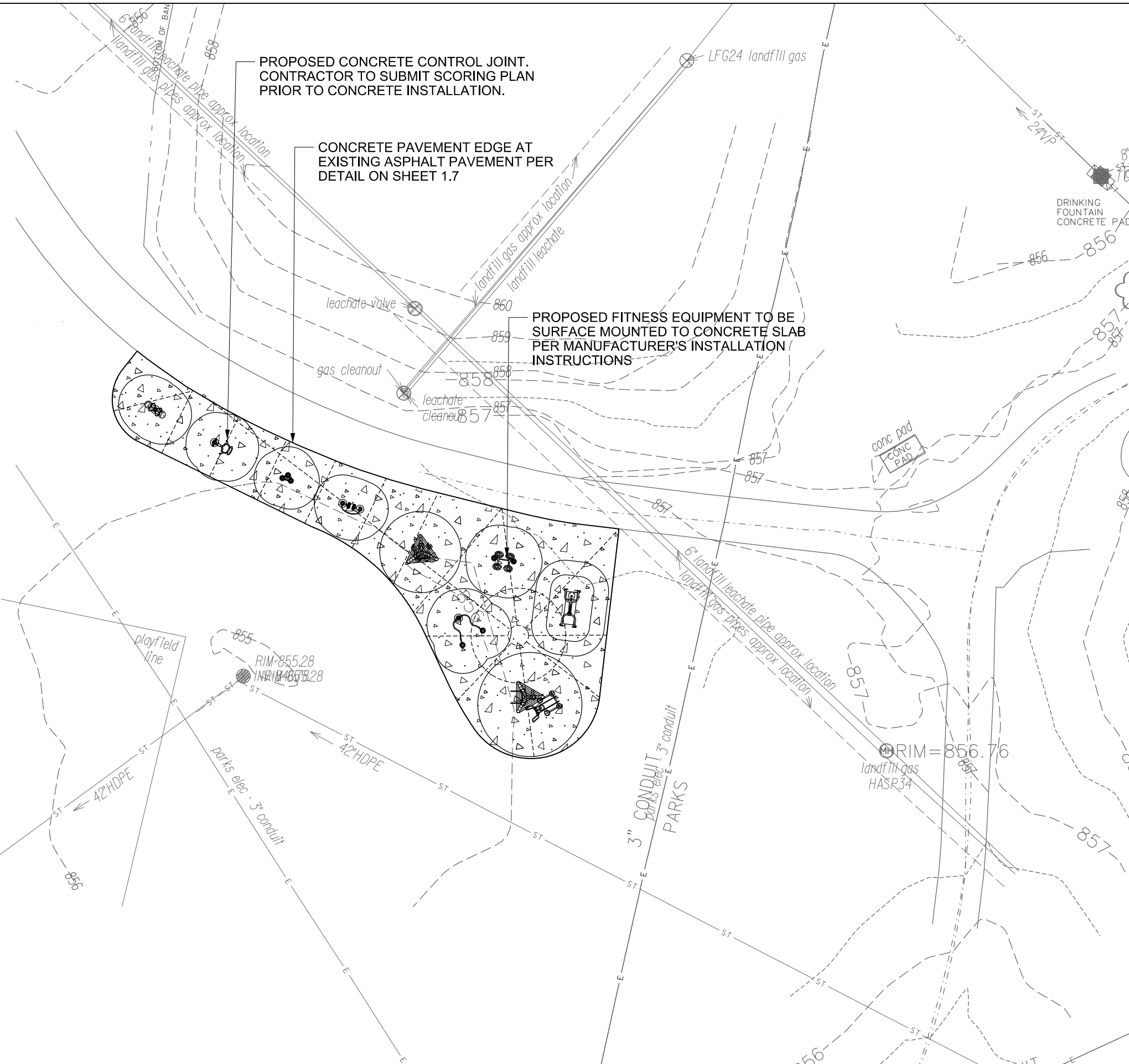
SHEET NUMBER:
1.2

LEGEND

-  PRO. CONCRETE
-  PRO. CONTROL JOINT
-  EX. CONTOUR (INDEX)
-  EX. CONTOUR (INTER.)
-  EX. APPROX. PARK BOUNDARY

NOTES

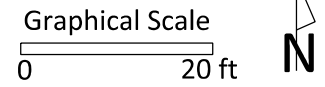
1.) THE CONTRACTOR IS RESPONSIBLE FOR REPAIRING ANY EXISTING UTILITIES, STRUCTURES, SIDEWALK, CURB, LAWN, PAVEMENT, ETC. DAMAGED THROUGH CONSTRUCTION ACTIVITIES AT THEIR OWN EXPENSE. REPAIRS MUST BE MADE IN ACCORDANCE WITH THE CITY OF MADISON STANDARD SPECIFICATIONS FOR PUBLIC WORKS CONSTRUCTION.



City of Madison
 Department of Public Works
PARKS DIVISION

City-County Building, Suite 104
 210 Martin Luther King, Jr. Blvd.
 Madison, WI 53703

play
MADISON
PARKS



PROJECT:
DEMETRAL PARK
ADULT FITNESS

DEMETRAL PARK
601 N. SIXTH ST
MADISON, WI 53704

Although every effort has been made in preparing these plans and checking them for accuracy, the contractor and subcontractors must check all details and dimensions of their trade and be responsible for the same.

ITEM	DATE
Drawn by: KK	06-16-2017
Approved by:	xx-xx-xxxx

PUBLIC WORKS PROJECT #:
7970

SHEET TITLE:
SITE PLAN

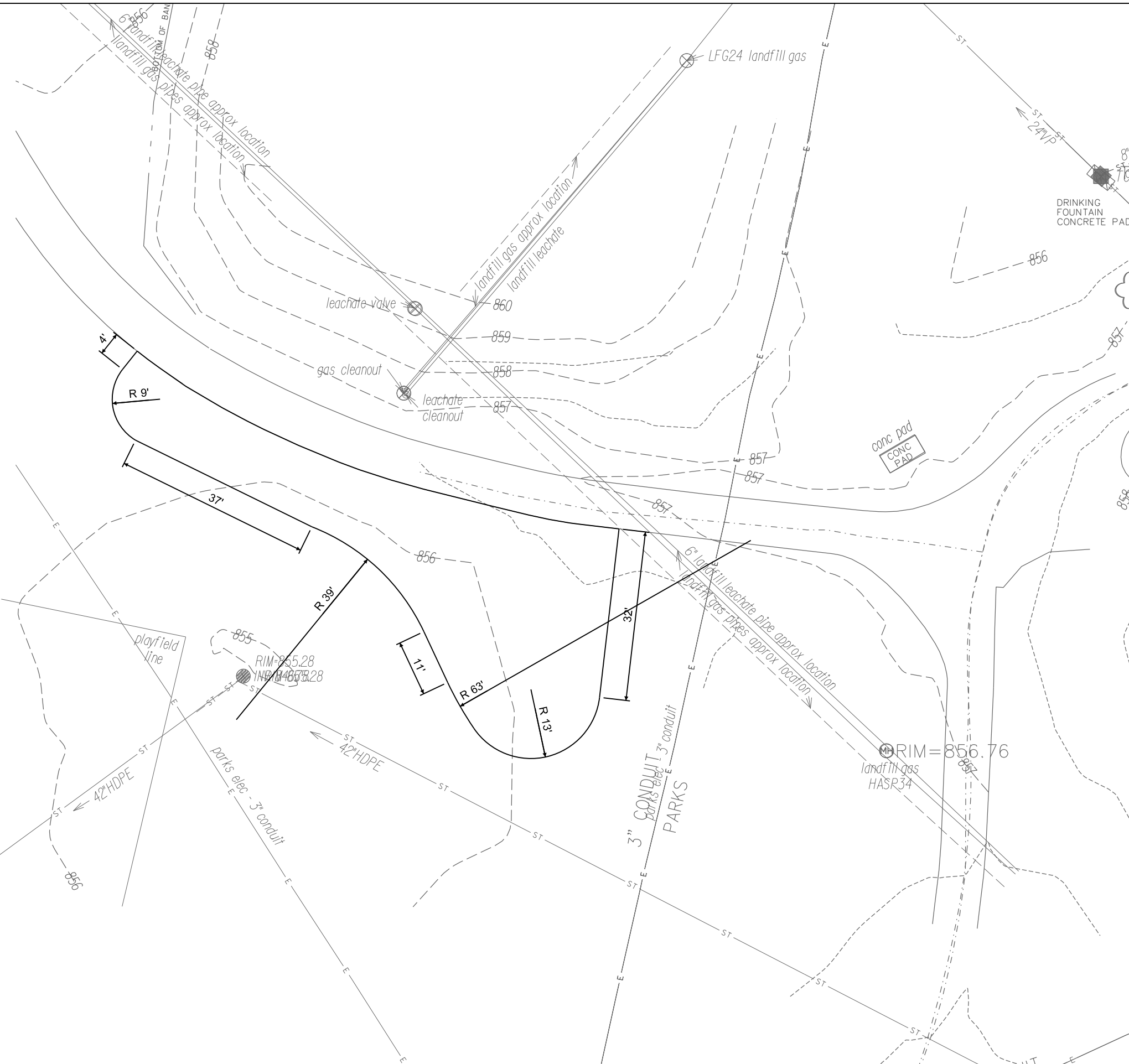
SHEET NUMBER:
1.3

LEGEND

- EX. CONTOUR (INDEX)
- - - EX. CONTOUR (INTER.)
- · - · - EX. APPROX. PARK BOUNDARY

NOTES

1.) THE CONTRACTOR IS RESPONSIBLE FOR REPAIRING ANY EXISTING UTILITIES, STRUCTURES, SIDEWALK, CURB, LAWN, PAVEMENT, ETC. DAMAGED THROUGH CONSTRUCTION ACTIVITIES AT THEIR OWN EXPENSE. REPAIRS MUST BE MADE IN ACCORDANCE WITH THE CITY OF MADISON STANDARD SPECIFICATIONS FOR PUBLIC WORKS CONSTRUCTION.



City of Madison
 Department of Public Works
PARKS DIVISION

City-County Building, Suite 104
 210 Martin Luther King, Jr. Blvd.
 Madison, WI 53703

play
MADISON
PARKS

Graphical Scale

0 20 ft



PROJECT:

**DEMETRAL PARK
 ADULT FITNESS**

**DEMETRAL PARK
 601 N. SIXTH ST
 MADISON, WI 53704**

Although every effort has been made in preparing these plans and checking them for accuracy, the contractor and subcontractors must check all details and dimensions of their trade and be responsible for the same.


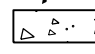
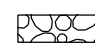
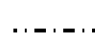
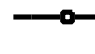
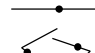
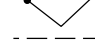





ITEM	DATE
Drawn by: KK	06-16-2017
Approved by:	xx-xx-xxxx

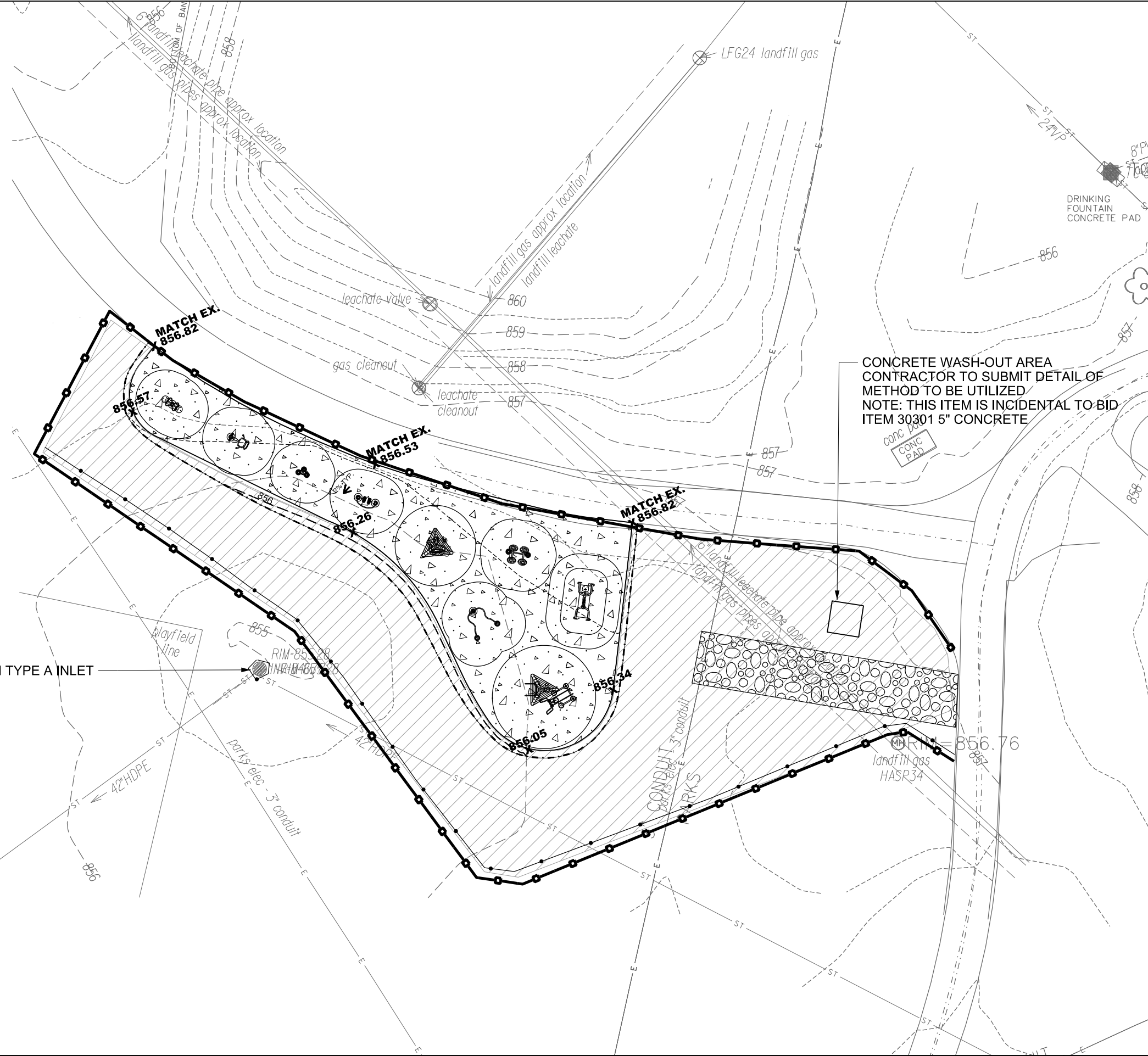
PUBLIC WORKS PROJECT #:
7970

SHEET TITLE:
SITE LAYOUT PLAN

SHEET NUMBER:
1.4

LEGEND

-  PRO. SPOT EL.
-  PRO. CONCRETE
-  PRO. CONSTRUCTION ENTRANCE
-  PRO. GRADING EXTENTS
-  PRO. CONSTRUCTION FENCE
-  PRO. SILT SOCK
-  PRO. INLET PROTECTION
-  PRO. CONTOUR (INDEX)
-  PRO. CONTOUR (INTER.)
-  EX. CONTOUR (INDEX)
-  EX. CONTOUR (INTER.)
-  EX. APPROX. PARK BOUNDARY




PROTECT INLET WITH TYPE A INLET PROTECTION

CONCRETE WASH-OUT AREA
CONTRACTOR TO SUBMIT DETAIL OF
METHOD TO BE UTILIZED
NOTE: THIS ITEM IS INCIDENTAL TO BID
ITEM 30301 5" CONCRETE

City of Madison
Department of Public Works
PARKS DIVISION

City-County Building, Suite 104
210 Martin Luther King, Jr. Blvd.
Madison, WI 53703

play
MADISON
PARKS

Graphical Scale
0 20 ft 

PROJECT:
DEMETRAL PARK
ADULT FITNESS

DEMETRAL PARK
601 N. SIXTH ST
MADISON, WI 53704

Although every effort has been made in preparing these plans and checking them for accuracy, the contractor and subcontractors must check all details and dimensions of their trade and be responsible for the same.

ITEM	DATE
Drawn by: KK	06-16-2017
Approved by:	xx-xx-xxxx

PUBLIC WORKS PROJECT #:
7970

SHEET TITLE:
GRADING AND
EROSION CONTROL
PLAN

SHEET NUMBER:
1.5



PROJECT:

**DEMETRAL PARK
 ADULT FITNESS**

**DEMETRAL PARK
 601 N. SIXTH ST
 MADISON, WI 53704**

Although every effort has been made in preparing these plans and checking them for accuracy, the contractor and subcontractors must check all details and dimensions of their trade and be responsible for the same.

ITEM	DATE

PUBLIC WORKS PROJECT #:
7970

SHEET TITLE:
**DESIGN
 COMPUTATIONS**

SHEET NUMBER:
1.6

Demetral Park Adult Fitness - Earthwork Quantities										
City of Madison, WI Public Works Contract 7970										
Date Revised: 5/15/2017										
Notes:										
Positive volumes are cuts, negative volumes are fills.										
Not all parts of all surface models (Digital Terrain Models) are used for computations or intended for actual construction.										
Existing										
Proposed Pro1.dtm										
Proposed Demetral_Survey2016-11-19.dtm										

Grp	Material	Item	From Surface Model	To Surface Model	area (sq ft)	depth (ft)	Unfac-tored volume (cu ft)	Unfac-tored volume (cu yd)	Expan-sion Factor (%)	Factored (Uncom-pacted) Volume (cu yd)
Grass to Concrete	Topsoil Excavate	Strip 6in topsoil	n/a	n/a	2411	0.50	1205.34	44.6	0%	44.6
Grass to Concrete	Subsoil Excavate	Cut subsoil to proposed subgrade	Ex-6in	Pro-11in	2411	varies	481.86	17.8	0%	17.8
Grass to Concrete	Subsoil Place	Fill subsoil to proposed subgrade	Ex-6in	Pro-11in	2411	varies	-15.65	-0.6	0%	-0.6
Grass to Concrete	Gravel (For Pavement) Place	Place 6in gravel base out to 6in from pavement edge	n/a	n/a	2411	-0.50	-1205.34	-44.6	0%	-44.6
Grass to Concrete	Concrete Place	Place 5in concrete	n/a	n/a	2326	-0.42	-969.09	-35.9	0%	-35.9
Grass to Concrete	Topsoil Place	Place 3in topsoil over 6in wide gravel edge	n/a	n/a	85	-0.25	-21.25	-0.8	0%	-0.8
Grass to Grass	Topsoil Excavate	Strip 6in topsoil	n/a	n/a	243	0.50	121	4.5	0%	4.5
Grass to Grass	Subsoil Excavate	Cut subsoil to proposed subgrade	Ex-6in	Pro-6in	243	varies	0	0.0	0%	0.0
Grass to Grass	Subsoil Place	Fill subsoil to proposed subgrade	Ex-6in	Pro-6in	243	varies	-34	-1.3	0%	-1.3
Grass to Grass	Topsoil Place	Place 6in topsoil	n/a	n/a	243	-0.50	-121	-4.5	0%	-4.5

Demetral Park Adult Fitness - Earthwork Quantities		
City of Madison, WI Public Works Contract #7970		
Date Revised: 5/15/2017		

Derived from more detailed spreadsheet available from Parks Div

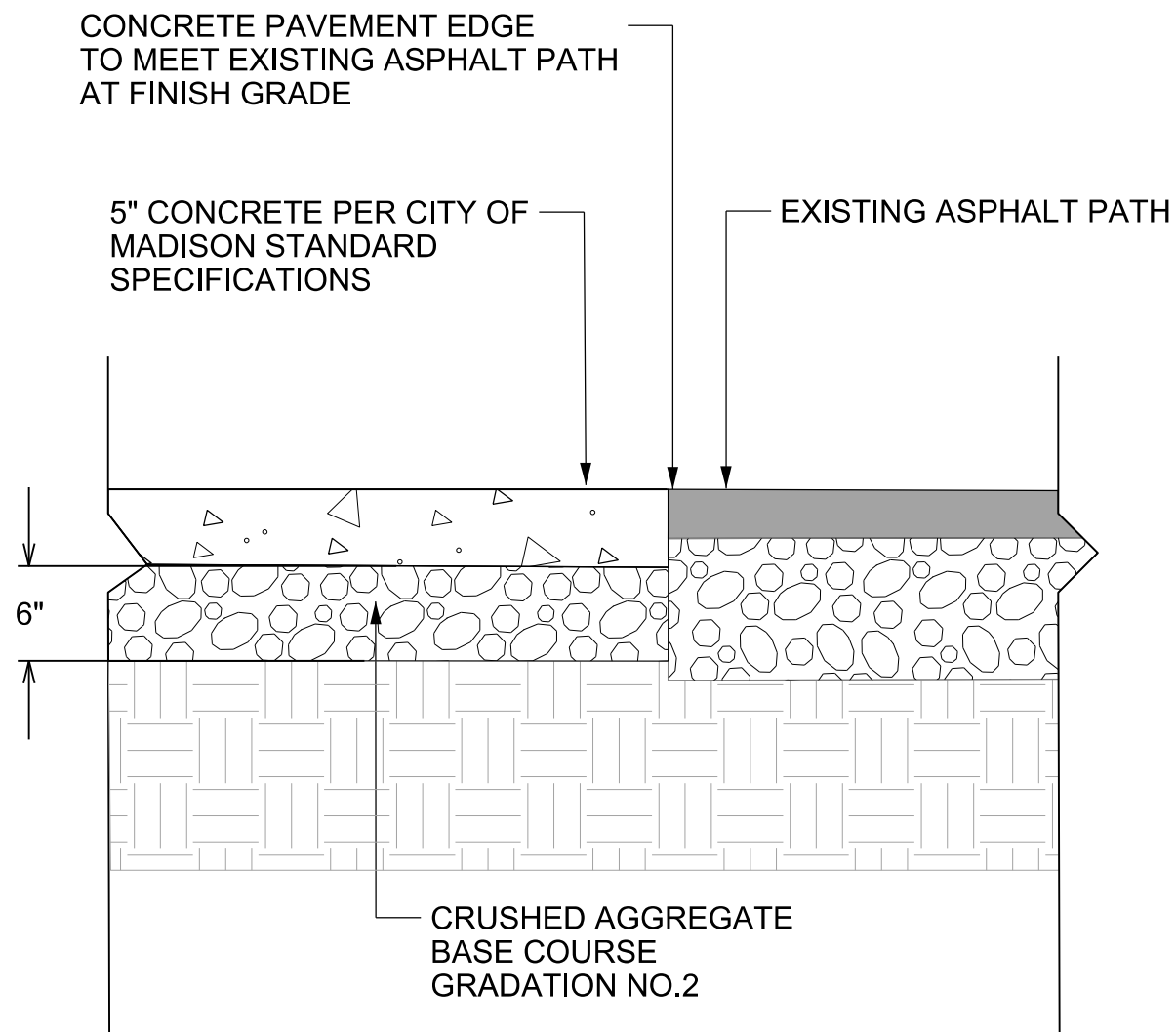
Computation Summary	
Positive volumes are cuts (material available), negative volumes are fills:	

Row Labels	Sum of Unfac-tored volume (cu yd)
Gravel (For Pavement) Place	-44.6
Subsoil Excavate	17.8
Subsoil Place	-1.9
Topsoil Excavate	49.1
Topsoil Place	-5.3
Concrete Place	-35.9
Grand Total	-20.7

Bid Item	Quantity	Units
20101 Excavation Cut	67	CY
20201 Fill	16	CY
20221 Topsoil	32	SY
30301 Concrete	2326	SF
40102 Crushed Aggregate Base Course Gradation No. 2 & 3	89	tons

PROJECT:

*DEMETRAL PARK
 ADULT FITNESS*



CONCRETE PAVEMENT EDGE AT EXISTING ASPHALT PAVEMENT

Although every effort has been made in preparing these plans and checking them for accuracy, the contractor and subcontractors must check all details and dimensions of their trade and be responsible for the same.

ITEM	DATE
Drawn by: KK	06-16-2017

PUBLIC WORKS PROJECT #:
7970

SHEET TITLE:
DETAILS

SHEET NUMBER:
1.7